

NAS 159

Time Machine – Best Practice

Set up a Time Machine backup
folder and back up your Mac

ASUSTOR COLLEGE

COURSE OBJECTIVES

Upon completion of this course you should be able to:

1. Set up an individual Time Machine backup folder and user account on the NAS in a multi-user environment
2. Backup data from your Mac to your NAS using Time Machine

PREREQUISITES

Course Prerequisites:

NAS 108: Using NAS with Apple Mac OS X

Students are expected to have a working knowledge of:

Apple Mac OS X

OUTLINE

1. Configuring your NAS

1.1 Setting up a backup folder

1.2 Creating an account

1.3 Enabling AFP service

2. Configuring Apple Mac OS X

2.1 Connecting to your NAS via AFP

2.2 Backing up data to your NAS using Time Machine

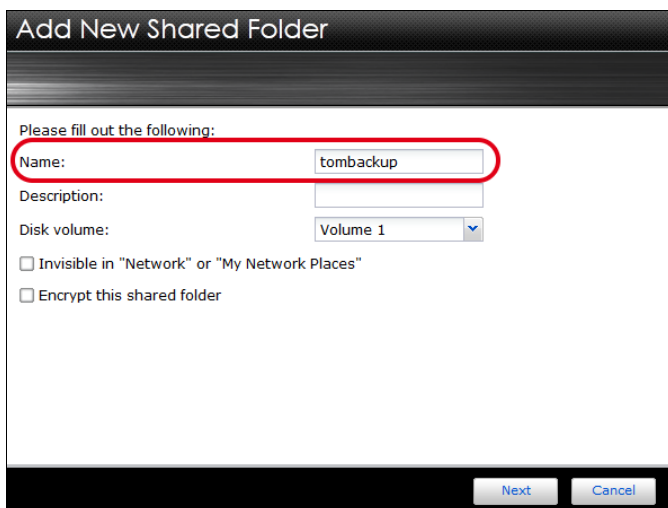
2.3 Configuring auto-mounting of the NAS folder on startup

1. Configuring your NAS

1.1 Setting up a backup folder

STEP 1

Select **[Access Control]** → **[Shared Folders]** and click on the **[Add]** button under the Shared Folders tab to create a new shared folder (in our example, “tombackup”). Follow the steps provided by the wizard to complete the folder creation process.



Add New Shared Folder

Please fill out the following:

Name: tombackup

Description:

Disk volume: Volume 1

☐ Invisible in "Network" or "My Network Places"

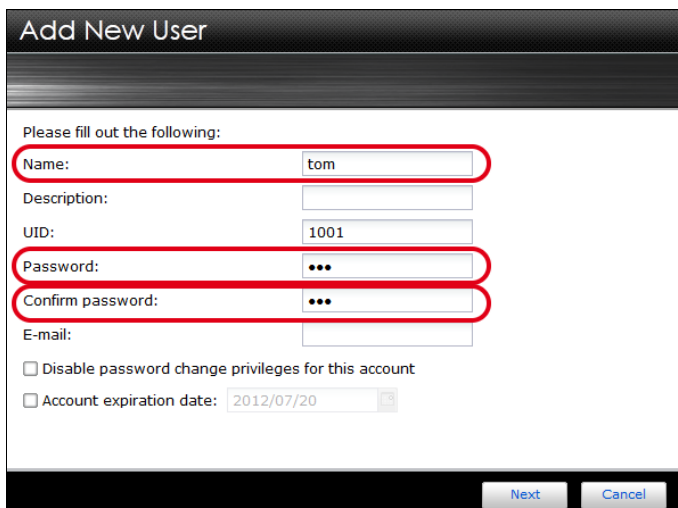
☐ Encrypt this shared folder

Next Cancel

1.2 Creating an account

STEP 1

Select **[Access Control]** → **[Local Users]** and then click on the **[Add]** button. The Add New User wizard will now appear. Fill out the required information and follow the steps to create a new user.



Add New User

Please fill out the following:

Name: tom

Description:

UID: 1001

Password: ...

Confirm password: ...

E-mail:

☐ Disable password change privileges for this account

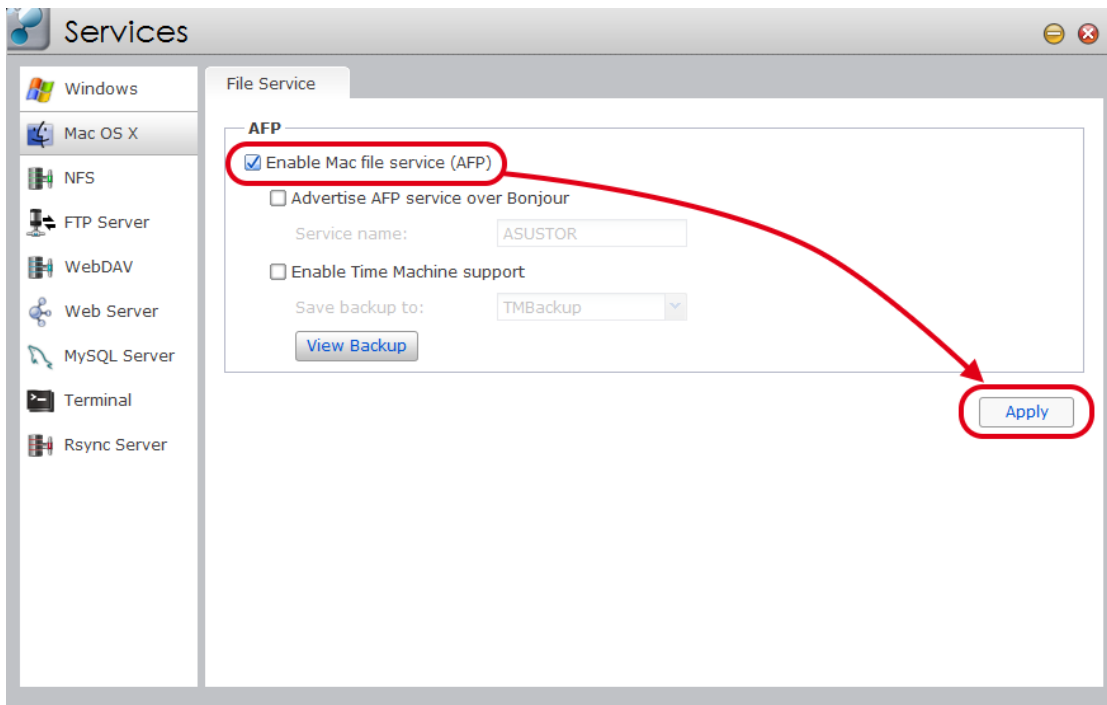
☐ Account expiration date: 2012/07/20

Next Cancel

1.3 Enabling AFP service

STEP 1

- ✓ Log in to ADM and then select **[Services] → [Mac OS X]**.
- ✓ Select the **[Enable Mac file service (AFP)]** checkbox and then click **[Apply]**.



2. Configuring Apple Mac OS X

2.1 Connecting to your NAS via AFP

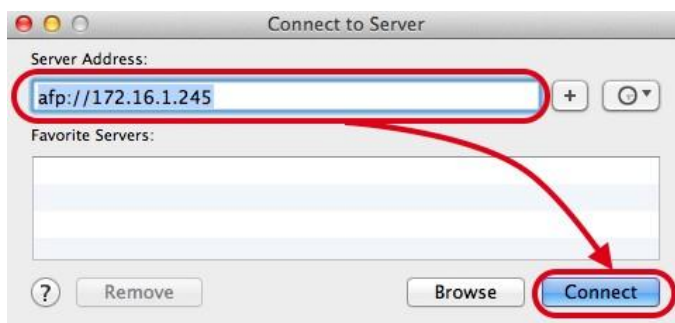
STEP 1

In Mac OS X select **[Go] → [Connect to Server...]**



STEP 2

In the **[Server Address:]** field, enter your NAS's IP address and then click **[Connect]** (for example: `afp://172.16.1.245`).



STEP 3

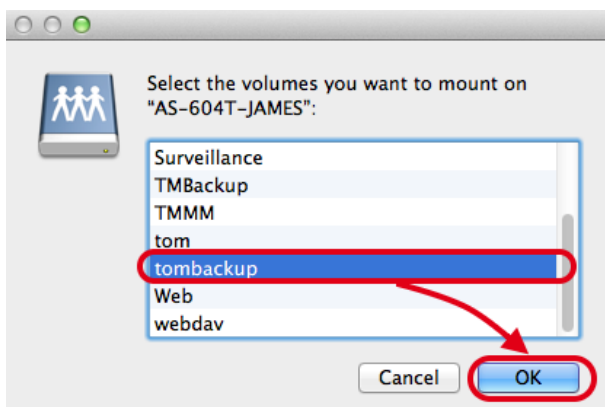
Enter the username and password for the previously created account and then click **[Connect]**.



*Note: it is recommended that you select the **[Remember this password in my keychain]** checkbox in order to avoid having to enter your password every time you execute a backup job.*

STEP 4

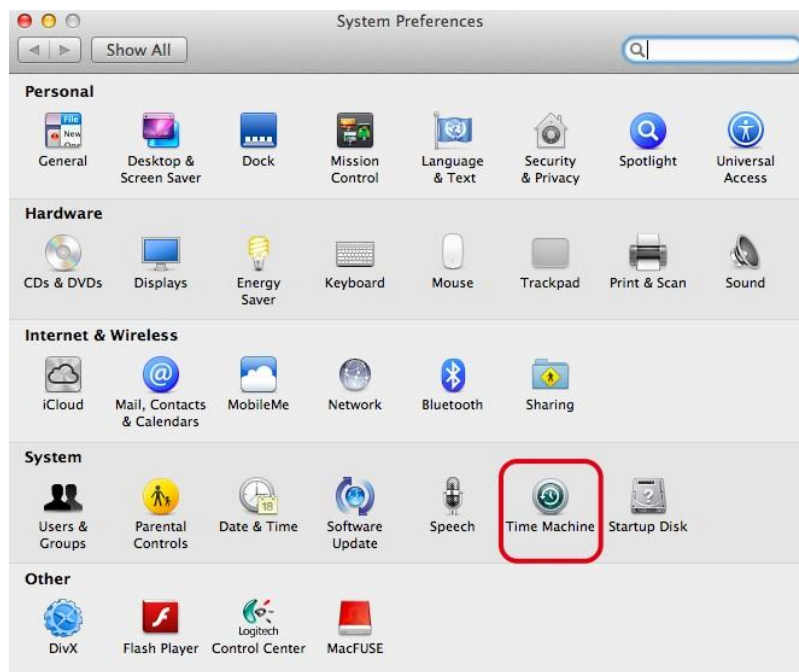
Select your previously created backup folder (in our example, "tombackup") and then click on **[OK]**.



2.2 Backing up data to your NAS using Time Machine

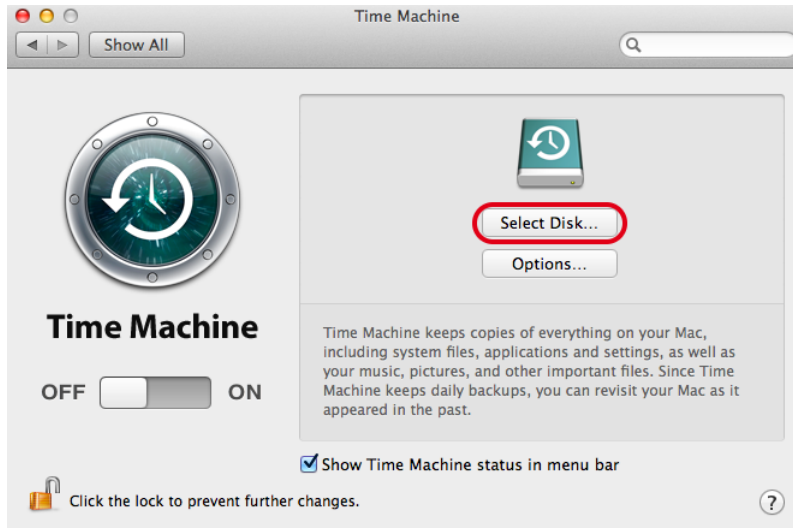
STEP 1

From the Apple menu, select **[System Preferences...]** and then select **[Time Machine]**.



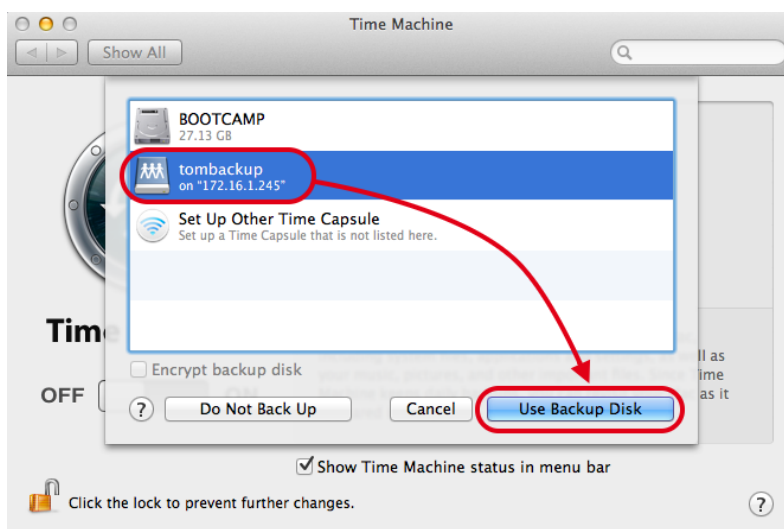
STEP 2

In Time Machine click on the **[Select Disk...]** button.



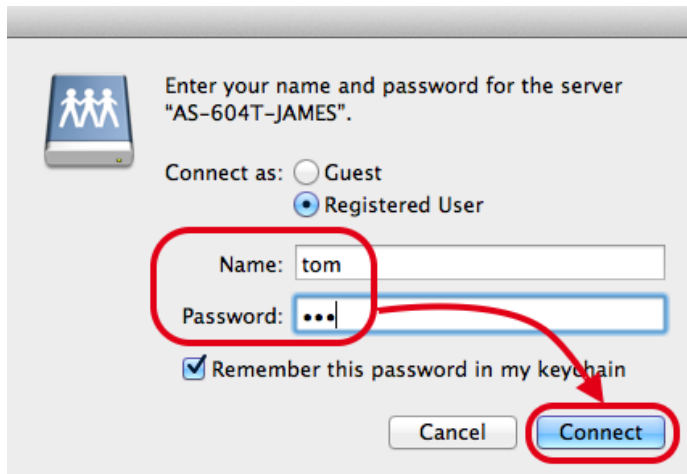
STEP 3

Select your previously created folder (in our example, “tombbackup”) and then click on **[Use Backup Disk]**.



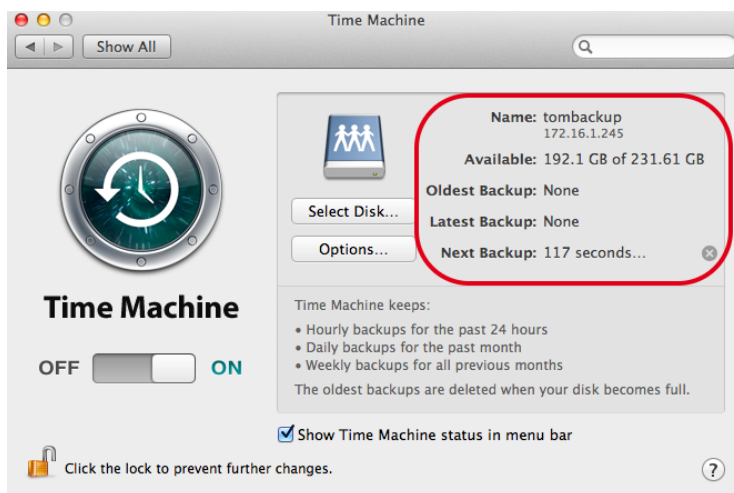
STEP 4

Enter the username and password for your account and then click on **[Connect]**.



STEP 5

After configuration has completed, you will be able to see the backup information as in the graphic below.



2.3 Configuring auto-mounting of the NAS folder on startup

When you start up your Mac, your NAS backup folder can be configured to be automatically mounted, allowing time machine to execute backup jobs.

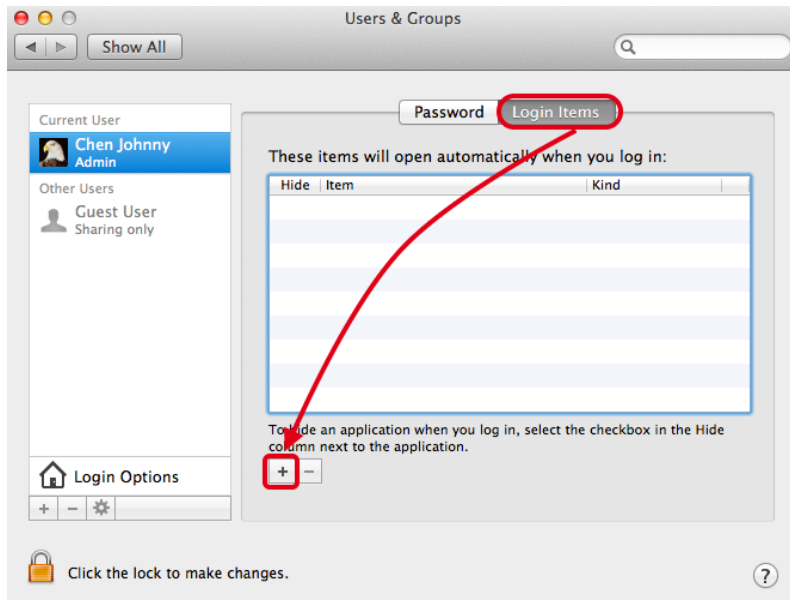
STEP 1

Select **[System Preferences] → [Users & Groups]**.



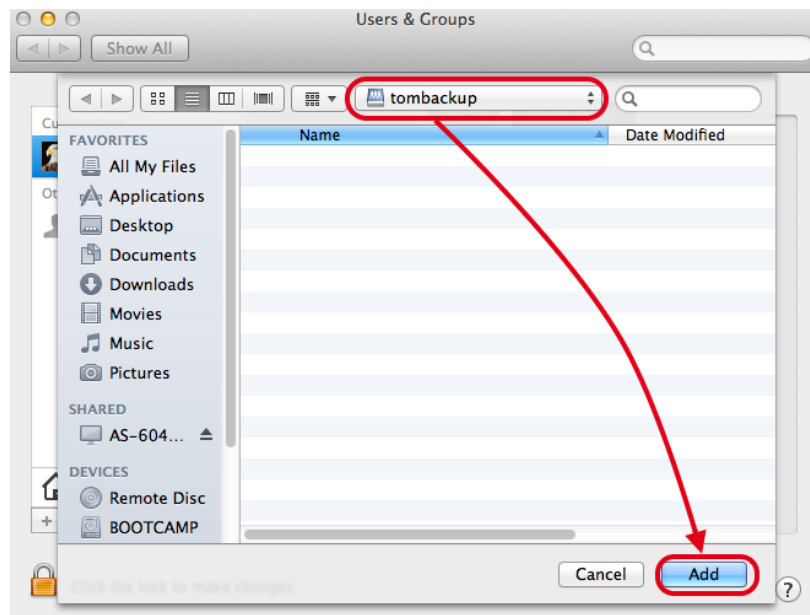
STEP 2

Select your login account and under the **[Login Items]** tab, click on the **[+]** button to add a new item that will be executed on login.



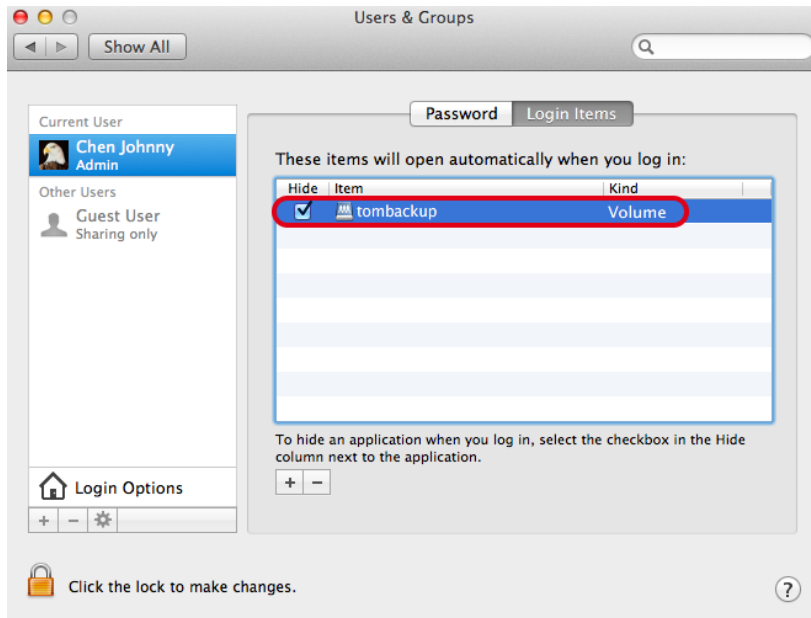
STEP 3

Select your previously created folder (in our example, “tombakup”) and then click on **[Add]**.



STEP 4

Select the corresponding checkbox for your folder. In the future, the system will automatically mount the folder when you log in. Time Machine will now be able to automatically perform scheduled backup jobs.



Note: If you wish to learn more about Time Machine, please see Mac 101: Time Machine (<http://support.apple.com/kb/HT1427>) or go to the Mac Help Center and search for “Time Machine”.

