

NAS 106

Using NAS with Microsoft Windows

Access the files on your NAS using
Windows and set up a network drive

ASUSTOR COLLEGE

COURSE OBJECTIVES

Upon completion of this course you should be able to:

1. Access the files on your NAS using Microsoft Windows
2. Set up a network drive

PREREQUISITES

Course Prerequisites:

None

Students are expected to have a working knowledge of:

Microsoft Windows

OUTLINE

1. Configuring your NAS

1.1 Enabling Windows file service (CIFS/SAMBA)

1.2 Creating a shared folder and setting up access rights

2. Configuring Windows

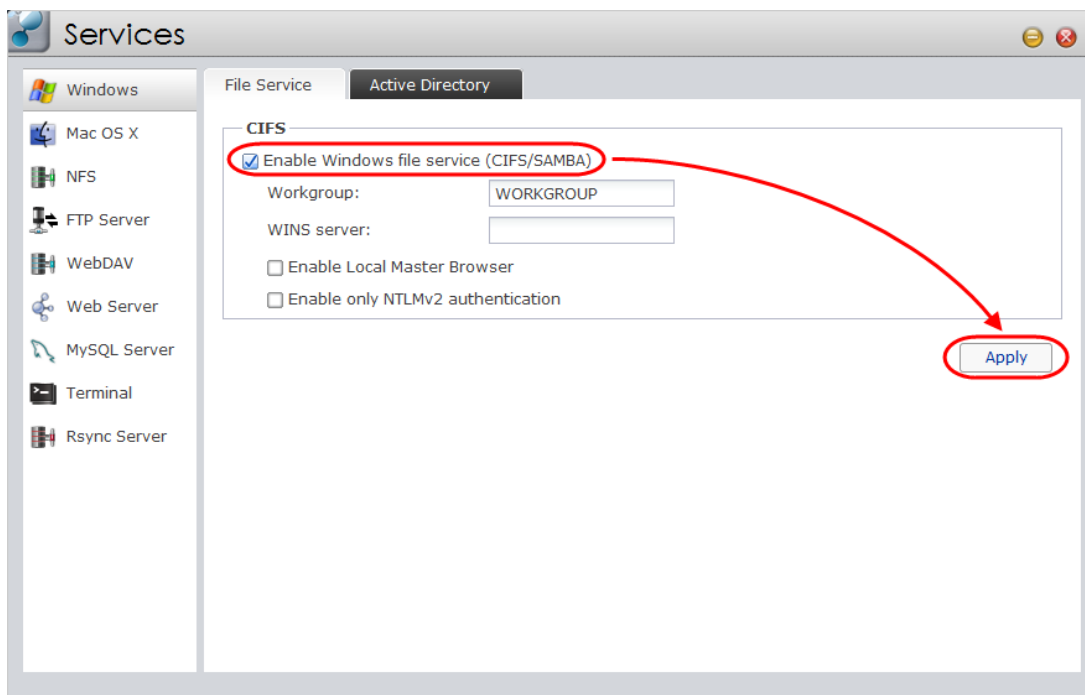
2.1 Setting up your shared folder as a network drive

1. Configuring your NAS

1.1 Enabling Windows file service (CIFS/SAMBA)

STEP 1

- ✓ Log in to ADM using your Web browser.
- ✓ Select **[Services]** → **[Windows]**.
- ✓ Select the **[Enable Windows file service (CIFS/SAMBA)]** checkbox and click **[Apply]**.



STEP 2

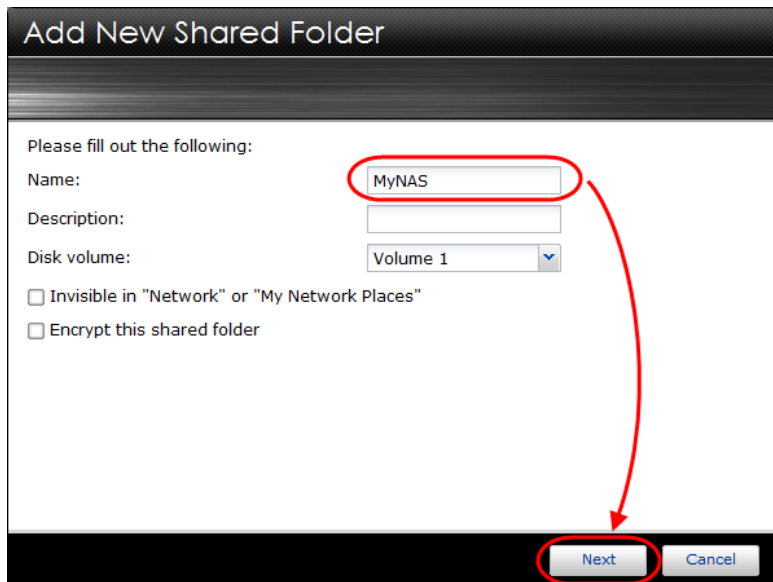
- ✓ Select **[Access Control]** → **[Shared Folders]**.
- ✓ Click on **[Add]**.



1.2 Creating a shared folder and setting up access rights

STEP 1

You are now ready to create a new shared folder on your NAS. Enter a name for the new folder and click **[Next]** once you are done. (In the example below, we have entered “MyNAS” as the name of our new folder).



Add New Shared Folder

Please fill out the following:

Name:

Description:

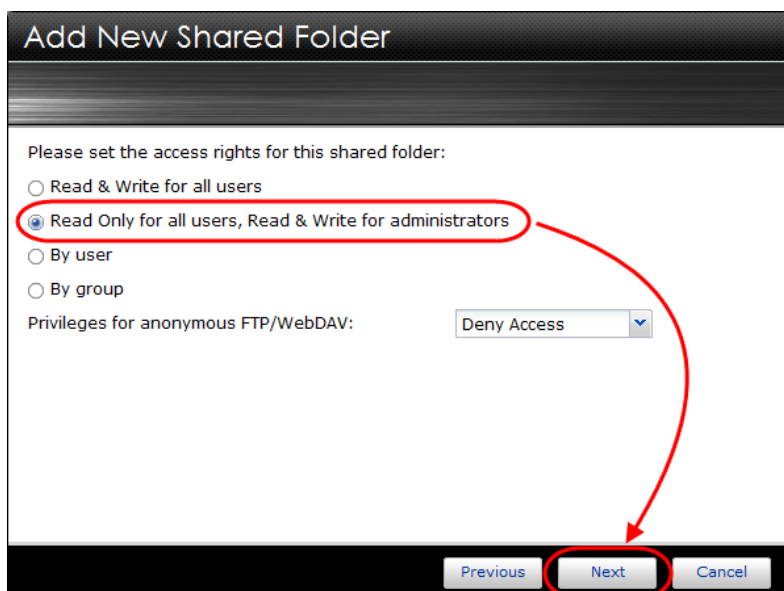
Disk volume:

Invisible in "Network" or "My Network Places"

Encrypt this shared folder

STEP 2

Set access rights for the folder by selecting the radio button corresponding to the access rights of your choice. (In the example below, the access rights that have been selected allow “Read Only” rights for all users and “Read & Write” rights for administrators). Once you’re done, click **[Next]**.



Add New Shared Folder

Please set the access rights for this shared folder:

Read & Write for all users

Read Only for all users, Read & Write for administrators

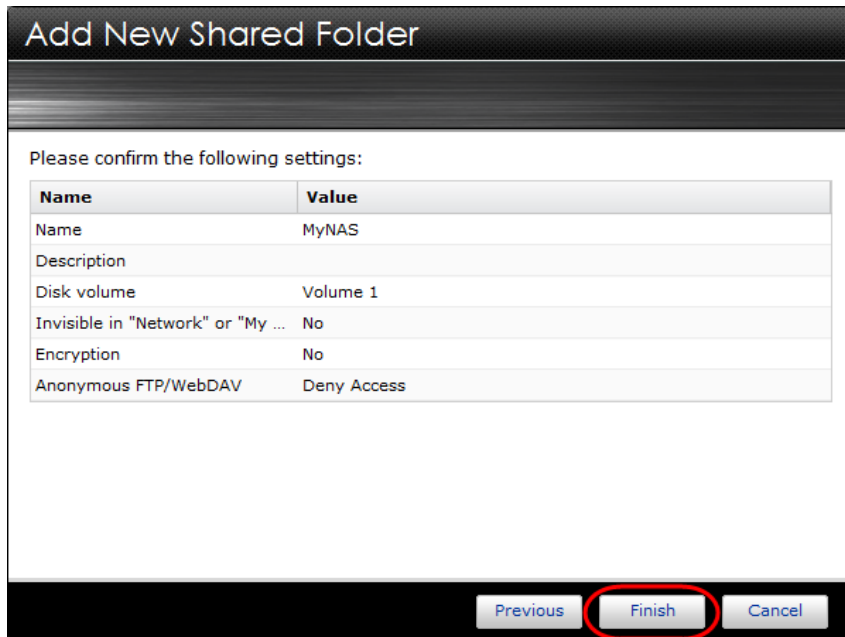
By user

By group

Privileges for anonymous FTP/WebDAV:

STEP 3

Look over a final summary of your settings. Once you're done, confirm these settings by clicking **[Finish]**.



The screenshot shows a dialog box titled "Add New Shared Folder". It contains a table with the following settings:

Name	Value
Name	MyNAS
Description	
Disk volume	Volume 1
Invisible in "Network" or "My ...	No
Encryption	No
Anonymous FTP/WebDAV	Deny Access

At the bottom of the dialog box, there are three buttons: "Previous", "Finish", and "Cancel". The "Finish" button is circled in red.

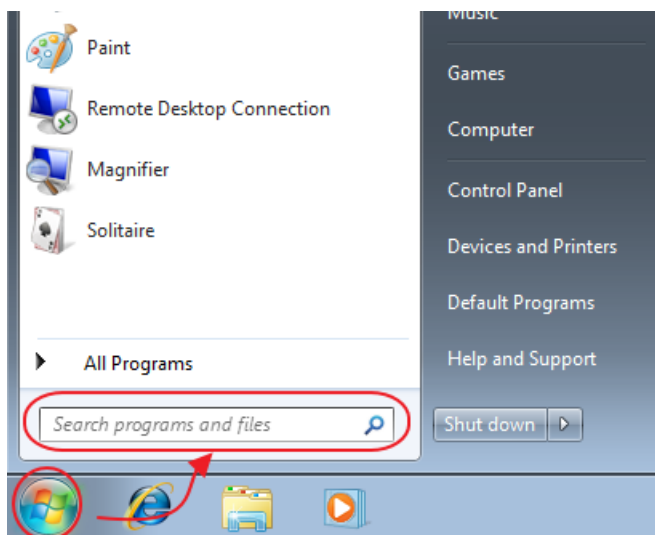
2. Configuring Windows

2.1 Setting up your shared folder as a network drive

STEP 1

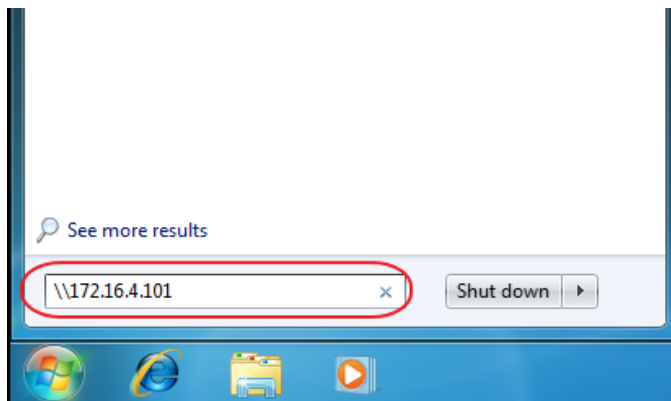
(We will be using a computer running Windows 7 as an example)

In Windows, click **[Start]**, and then click inside the **[Search programs and files]** box.



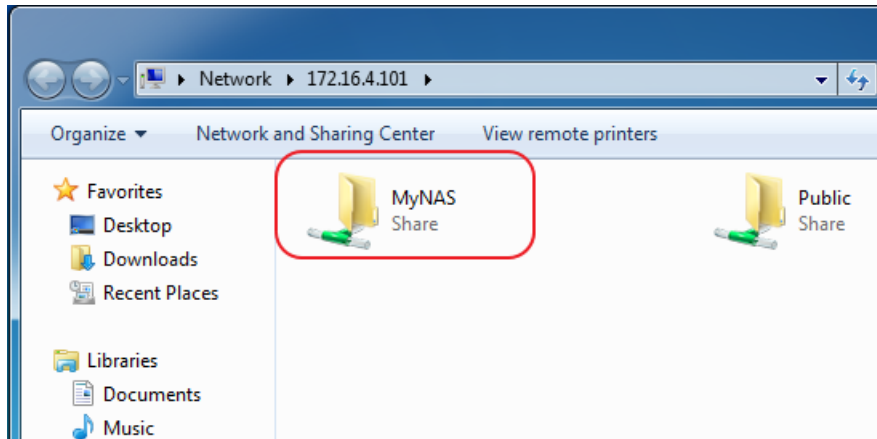
STEP 2

Enter two backslashes followed by your NAS's IP address into the **[Search programs and files]** box and press **[Enter]**. (In the example below, we have entered 172.16.4.101 as our NAS's IP address).



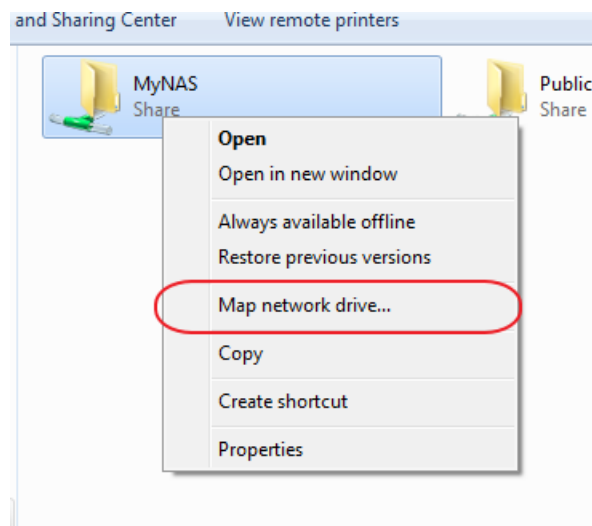
STEP 3

Windows will now connect to your NAS via CIFS/SAMBA (we have enabled Windows file service in the first section). You will then be able to see the shared folder that you have previously created on your NAS ("MyNAS" in the example below).



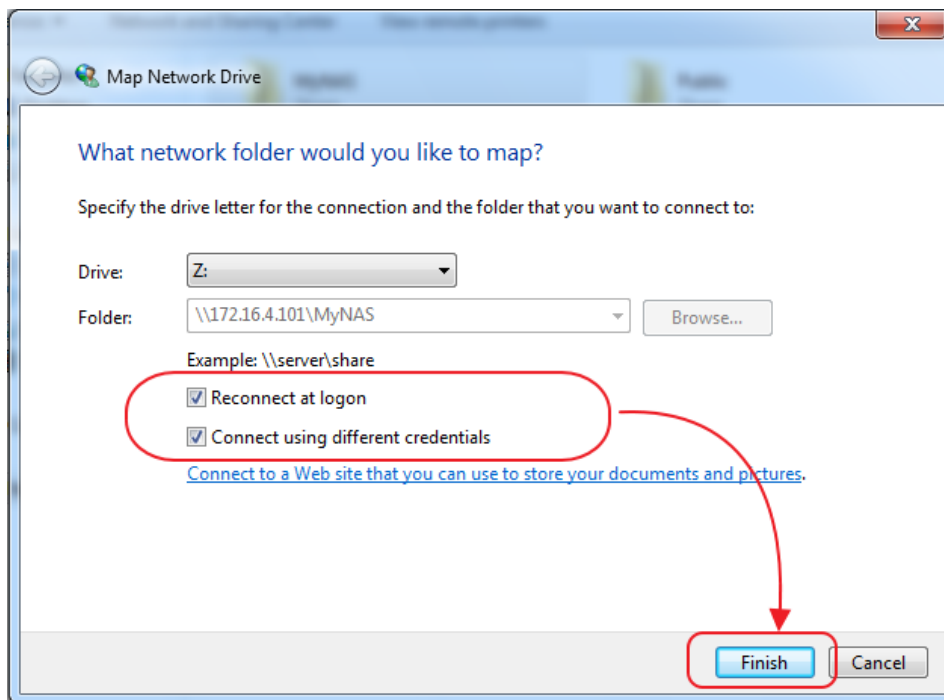
STEP 4

Right-click on your shared folder ("MyNAS" in the example below) and select **[Map network drive...]**.



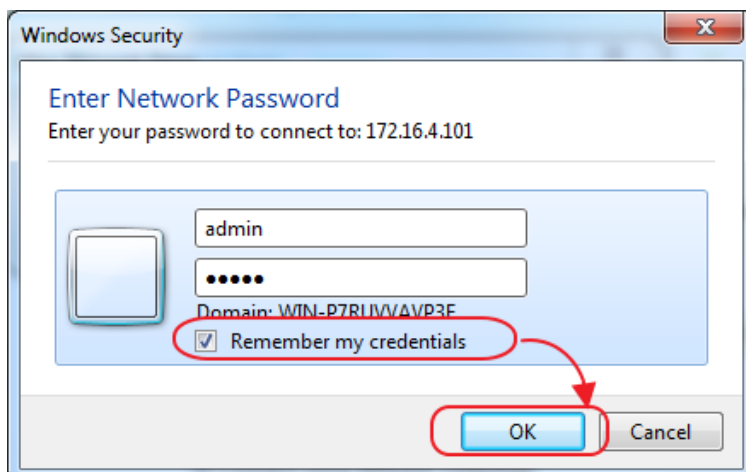
STEP 5

Specify the drive letter that you wish to use for the network drive and select the **[Reconnect at logon]** and **[Connect using different credentials]** checkboxes. Once you're done, click **[Finish]**.



STEP 6

Enter your NAS username and password into the dialog box that appears and select the **[Remember my credentials]** checkbox. Once you're done, click **[Finish]**.



STEP 7

When you click on **[Computer]** in Windows, you will see that your shared folder (“MyNAS” in our example) has become a network drive on your computer. You can now drag and drop files to this network drive and they will be automatically transferred to the shared folder on your NAS.

