


NAS 221

Remote Access – Using Cloud Connect™

Access the files on your NAS
remotely with Cloud Connect™

ASUSTOR COLLEGE



COURSE OBJECTIVES

Upon completion of this course you should be able to:

1. Connect to your ASUSTOR NAS through the Internet

PREREQUISITES

Course Prerequisites:

None

Students are expected to have a working knowledge of:

N/A

OUTLINE

1. Remote Access

1.1 Connecting to your NAS using the internet

1.2 Using Cloud Connect™

1.3 Configuring connections for additional services

1.4 Additional notes

1. Remote Access

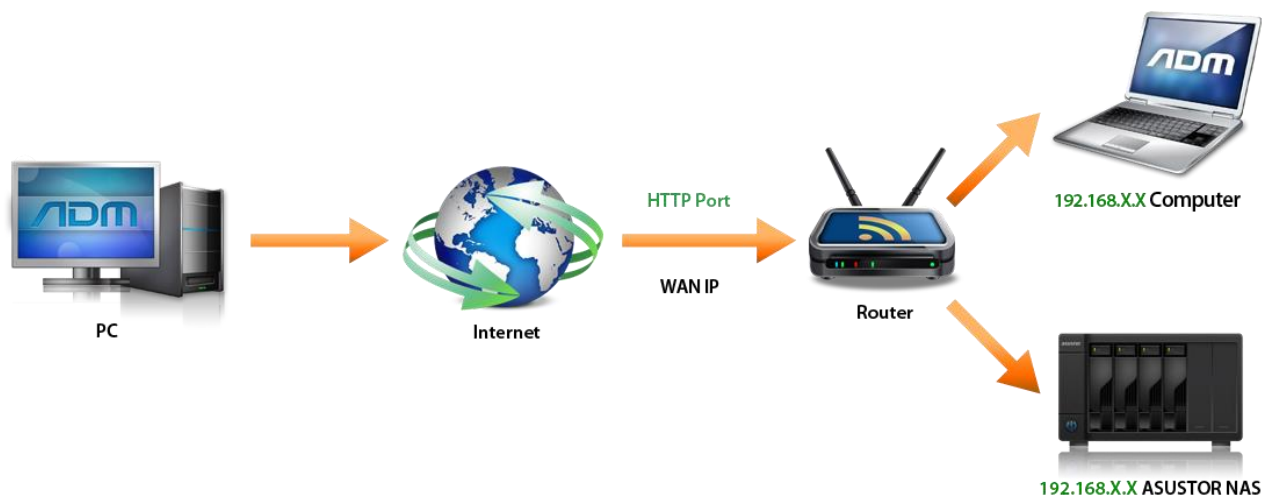
1.1 Connecting to your ASUSTOR NAS using the internet

ASUSTOR provides users with quick and convenient solutions that allow them to use their NAS through the internet and remotely access their files, creating an exclusive private cloud. You can use any of the following three methods to set up remote access to your NAS.

a. Directly connecting your NAS to the internet



b. Connect your NAS to your router and then use ASUSTOR Cloud Connect™



c. Connect your NAS to the internet and manually configure your connection.

For more information please see: [NAS 224 Remote Access - Manual Configuration](#)

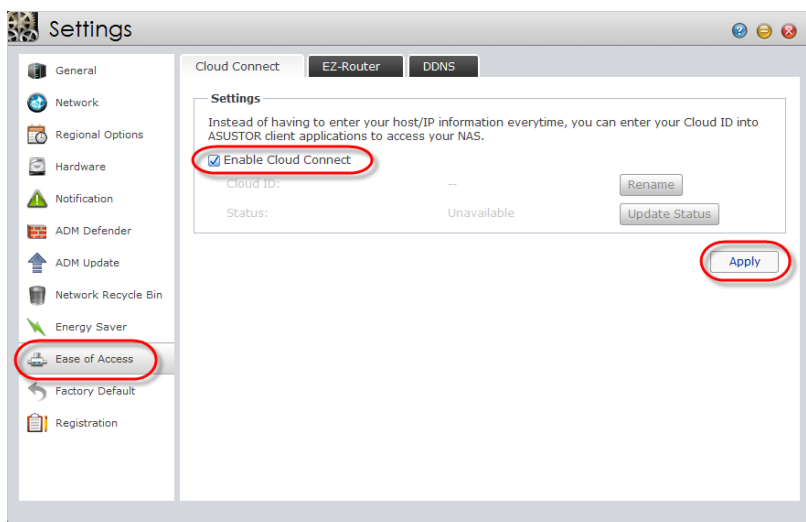
This guide will further explain how to set up remote access to your NAS using Cloud Connect™.

1.2 Using Cloud Connect

ASUSTOR's exclusive Cloud Connect™ feature allows you to setup your NAS for remote access in just two easy steps, effectively creating a private cloud. Before enabling Cloud Connect™ please make sure that you have signed up for an ASUSTOR ID and registered your NAS.

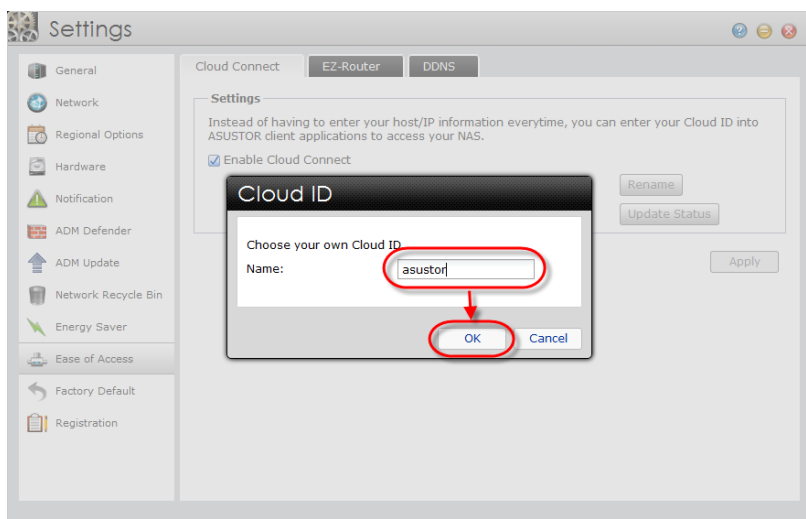
STEP 1

- ✓ Log into ADM using a Web browser.
- ✓ Select **[Settings]** → **[Ease of Access]**.
- ✓ Select the **[Enable Cloud Connect]** checkbox and then click on **[Apply]**.



STEP 2

- ✓ Enter a name of your liking for your Cloud ID and then click **[OK]**.

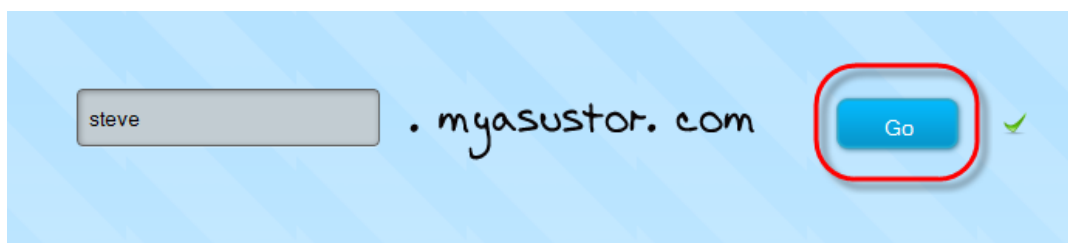


STEP 3

You are now ready to connect to your NAS using the internet. There are two ways to do this:

a. Connecting through the myasustor website

Enter <http://www.myasustor.com/> into your Web browser. Enter your Cloud ID into the required field and then click on [ping]. Once the [Go] button appears, click on it to connect to your NAS.



b. Connecting directly

Enter <http://Your Cloud ID.myasustor.com:8000/> to connect to your NAS. For example, if your Cloud ID is "johnny" then you would enter <http://johnny.myasustor.com:8000/>.

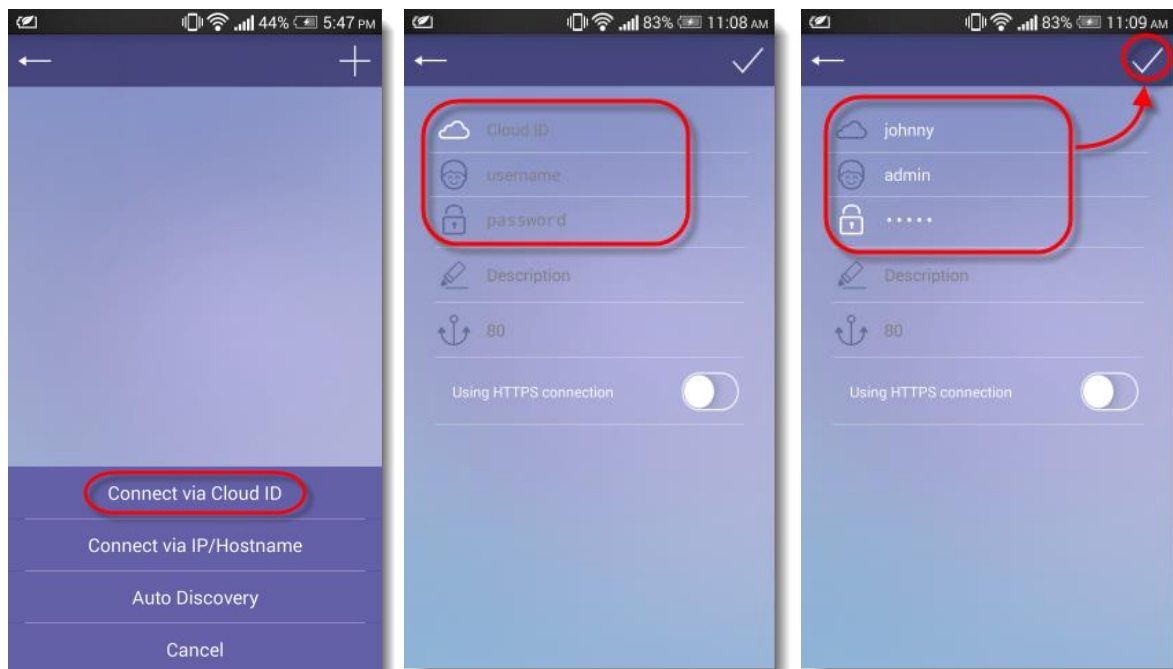
c. Connecting using an ASUSTOR mobile app

Open the ASUSTOR mobile app that you wish to connect to your NAS with.

Select **[Connect via Cloud ID]** for the connection method that you wish to use and then enter your connection information:

- **Cloud ID:** Enter you Cloud ID here. For example, if your Cloud ID is “johnny” then you would enter “johnny” here.
- **Username:** Enter the username for your NAS here.
- **Password:** Enter the password for your NAS here.

Once you have entered the connection information, select the **“login”** button to connect to your NAS.

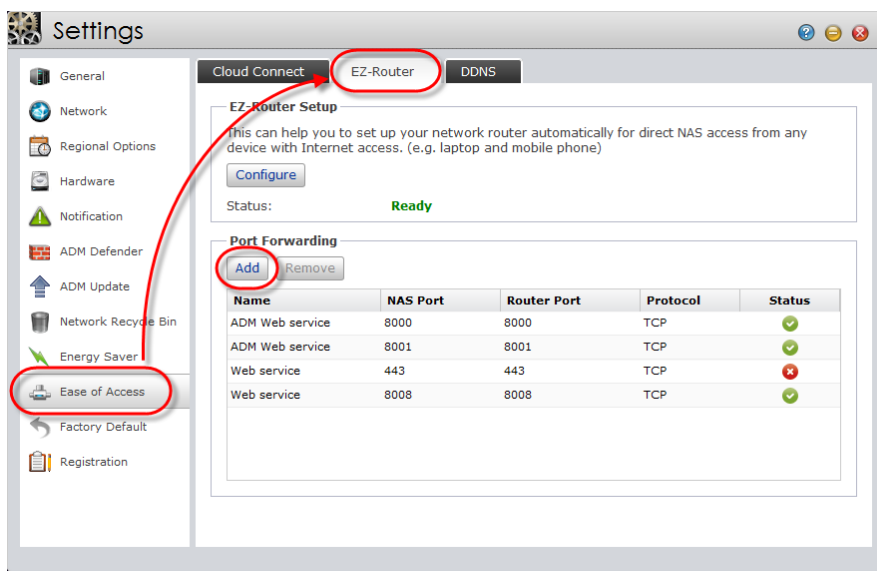


1.3 Configuring connections for additional services

Cloud Connect™ will open a connection for ADM’s Web server to allow for remote access from the Internet. If you wish to open additional services for remote access, the instructions below will help you to do so.

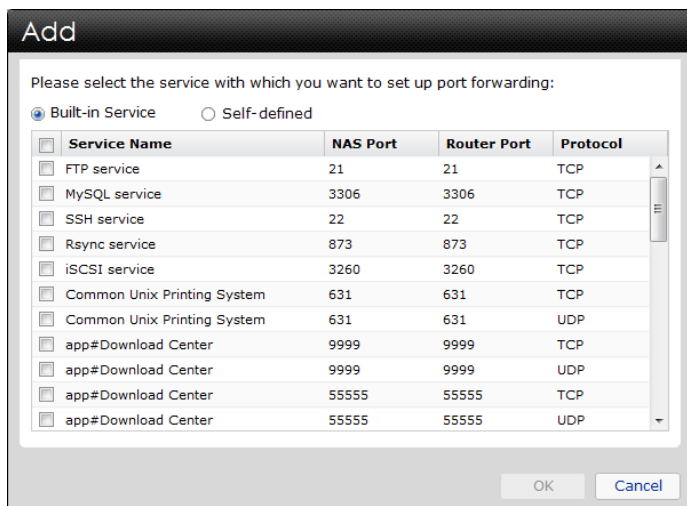
STEP 1

- ✓ In ADM click on **[Settings]**.
- ✓ Select **[Ease of Access]** and then click on the **[EZ-Router]** tab.
- ✓ Under the Port Forwarding section click on the **[Add]** button.

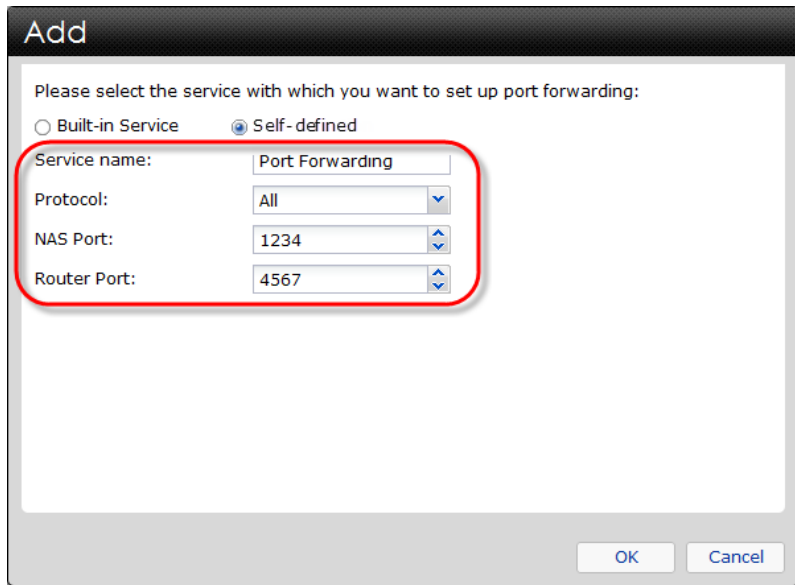


STEP 2

- ✓ You can now select the services that you wish to open for remote access from the Internet.



- ✓ If the service that you wish to open is not on the list or you wish to set up self-defined port forwarding, click on the **[Self-defined]** radio button and fill out the required fields.



The screenshot shows a dialog box titled "Add" with the instruction "Please select the service with which you want to set up port forwarding:". There are two radio buttons: "Built-in Service" (unselected) and "Self-defined" (selected). Below the radio buttons, there are four input fields: "Service name:" with a dropdown menu showing "Port Forwarding"; "Protocol:" with a dropdown menu showing "All"; "NAS Port:" with a dropdown menu showing "1234"; and "Router Port:" with a dropdown menu showing "4567". A red rounded rectangle highlights these four input fields. At the bottom right of the dialog box, there are "OK" and "Cancel" buttons.

List of ports used by ASUSTOR applications:

<http://support.asustor.com/index.php?/Knowledgebase/Article/View/116/0/what-network-ports-are-used-by-asustor-services>

1.4 Additional notes

1. A list of compatible routers may be found here:

<http://www.asustor.com/service/router?id=router>

2. If you are unable to successfully configure access using the methods outlined in this guide, please see: [NAS 224 Remote Access - Manual Configuration](#)