

NAS 258

Using Dropbox on ASUSTOR NAS

Synchronize your Dropbox data
to an ASUSTOR NAS

ASUSTOR COLLEGE

COURSE OBJECTIVES

Upon completion of this course you should be able to:

1. Synchronize the data in your Dropbox to an ASUSTOR NAS

PREREQUISITES

Course Prerequisites:

None

Students are expected to have a working knowledge of:

Dropbox

OUTLINE

1. Configuring your NAS

1.1 Installing Dropbox from App Central

1.2 Configuring Dropbox on your NAS

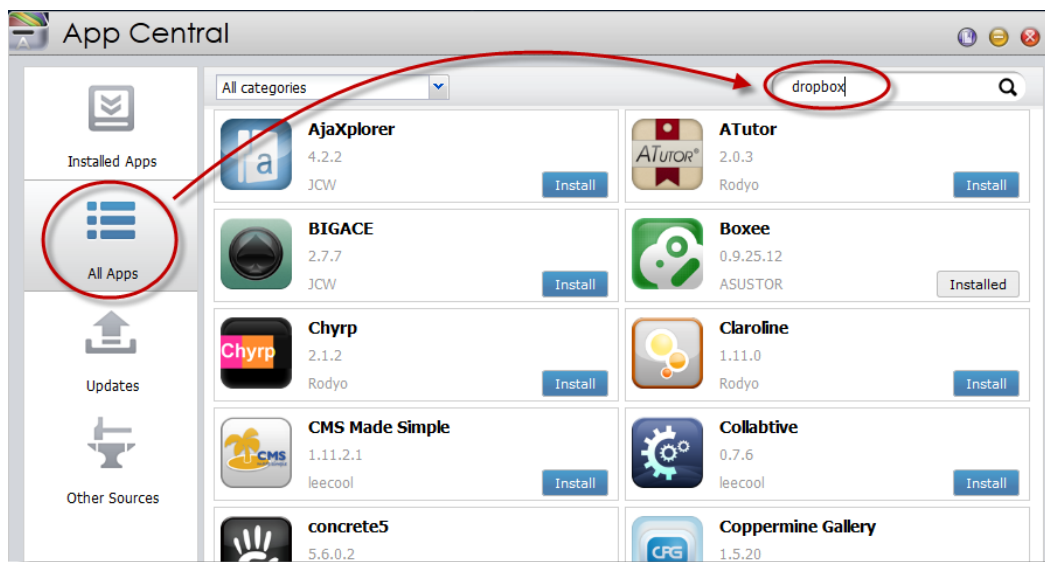
1.3 Additional notes

1. Configuring your NAS

1.1 Installing Dropbox from App Central

STEP 1

- ✓ Log in to ADM using your Web browser.
- ✓ Select **[App Central]** → **[All Apps]**.
- ✓ Search for Dropbox and then click on **[Install]**.



1.2 Configuring Dropbox on your NAS

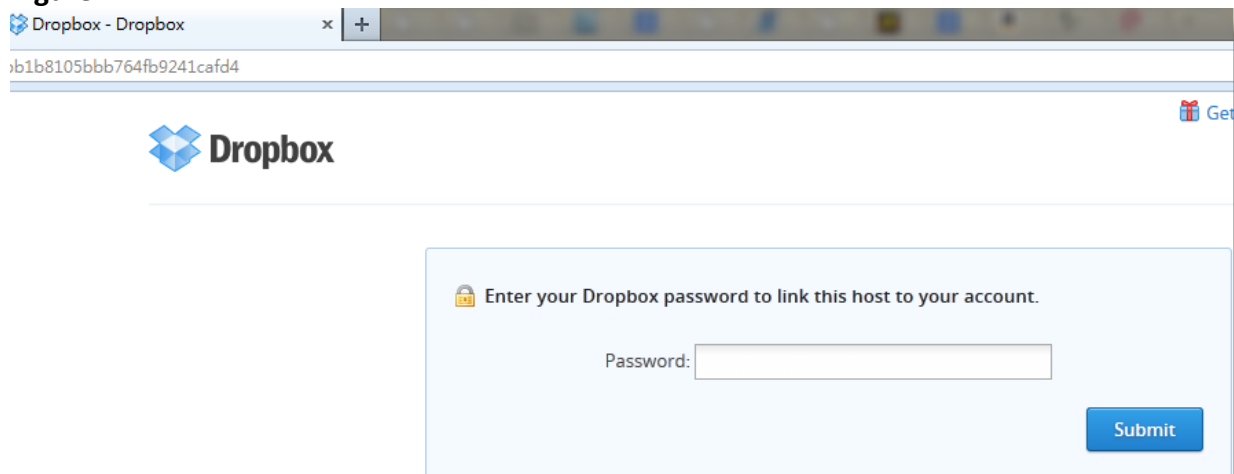
STEP 1

- ✓ After installing Dropbox, click on the **[Dropbox]** icon on the ADM desktop.
- ✓ After opening Dropbox, click on the **[Sign in]** button. (Figure 1)
- ✓ Your browser should now open a new tab or page and redirect to the Dropbox website. You will now need to enter your Dropbox password in order to successfully authorize and link the NAS to your Dropbox account. (Figure 2)

Figure 1



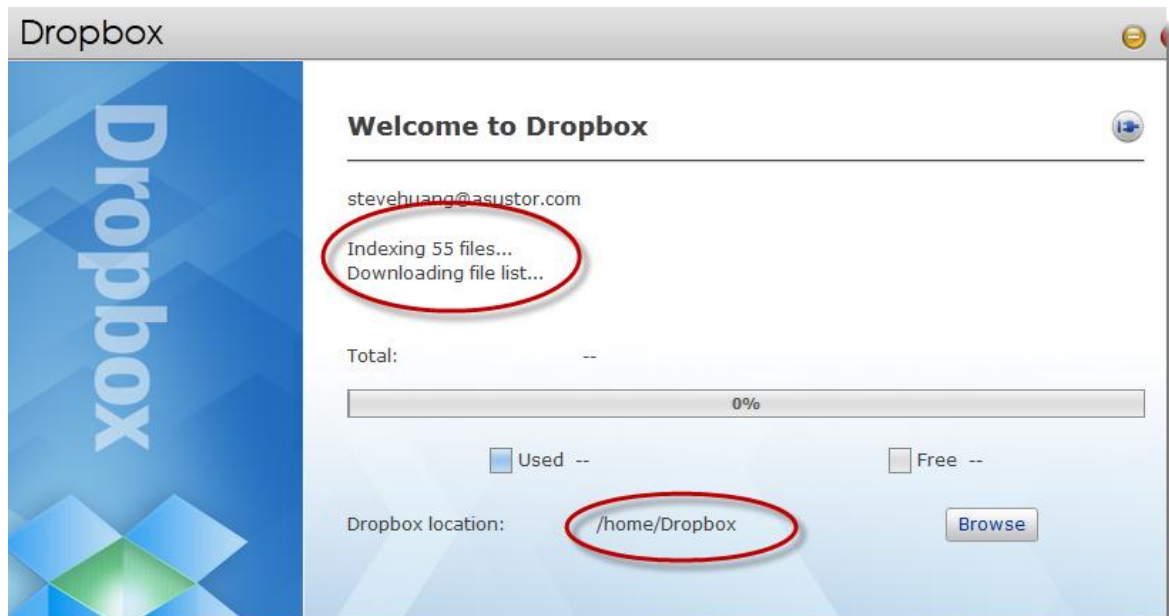
Figure 2



STEP 3

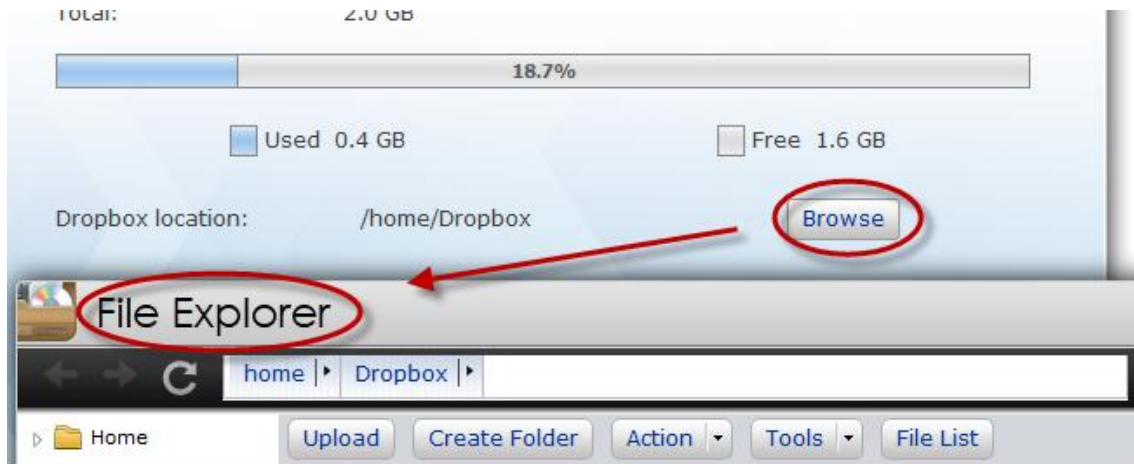
- ✓ After successfully logging in to Dropbox, the data stored in your Dropbox will automatically be synchronized to the NAS.
- ✓ The data stored in your Dropbox will be synchronized to the [Home] folder of the ADM account you are currently using.

Note: The location of the Dropbox folder on the NAS is: /Home/Dropbox



1.3 Additional Notes

1. You can click on the **[Browse]** button to use [File Explorer] to manage your Dropbox files.



2. Once you have successfully installed and logged in to Dropbox, your NAS will be automatically synchronized with Dropbox. In the event of any file changes, the changes will automatically be synchronized from your NAS to Dropbox or vice versa.
3. Dropbox on ASUSTOR NAS supports multiple users. This means that each user on the NAS can use their own personal Dropbox account to synchronize data with the NAS.