

NAS 107

Introduction to Control Center

Perform basic management
on your NAS using Control Center

ASUSTOR COLLEGE

COURSE OBJECTIVES

Upon completion of this course you should be able to:

1. Use Control Center to perform basic management on ASUSTOR NAS devices in your local area network

PREREQUISITES

Course Prerequisites :

None

Students are expected to have a working knowledge of:

N/A

OUTLINE

1. Introduction to Control Center

1.1 Introduction to Control Center

1.2 Where to get Control Center

2. Using the Windows Version of Control Center

2.1 Installing Control Center

2.2 Introduction to Control Center functions

3. Using the Mac Version of Control Center

3.1 Introduction to Control Center functions

1. Introduction to Control Center

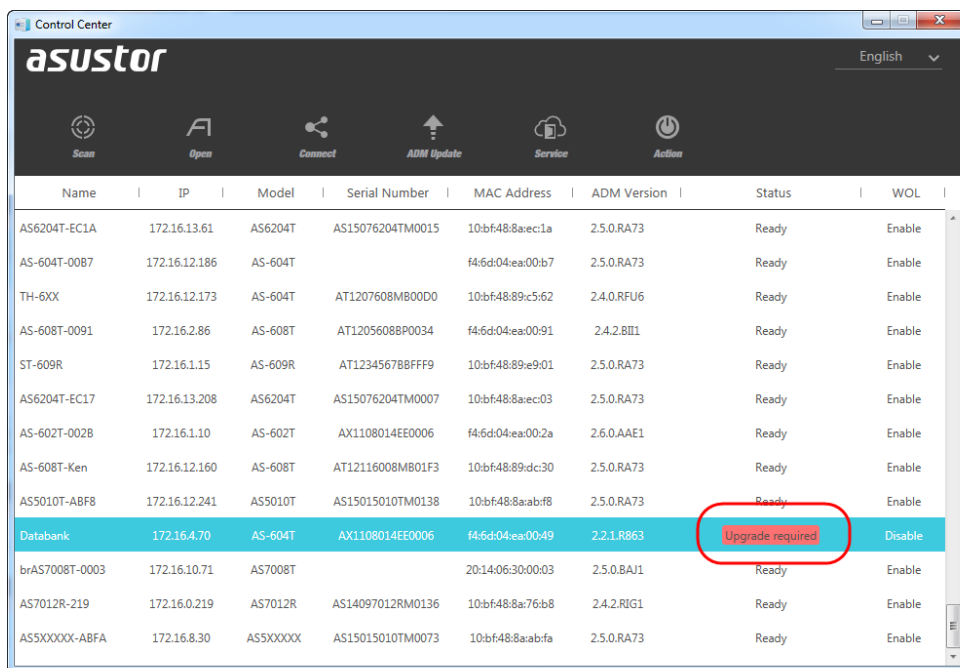
1.1 Introduction to Control Center

ASUSTOR Control Center is a utility created for use with ASUSTOR NAS devices. Its key functions are:

1. Helping Windows and Mac users to quickly find ASUSTOR NAS devices on their local area network and carry out system installation, establishing connections to the NAS and configuration of basic settings.
2. Ability to remotely execute shut down, sleep and Wake-on-LAN (WOL) functions.
3. The Windows version of Control Center provides a rich variety of management functions including the abilities to scan the local area network for ASUSTOR NAS devices, quickly log into the ADM interface, establish connections to the NAS, update ADM, open Web interfaces for different services, and access to power controls. Furthermore, Control Center allows you to execute Wake-on-LAN (WOL), use the Find Me function, use Night Mode, put the NAS to sleep, restart the NAS and shut it down.

Supported operating systems: Mac OS X 10.6 onwards; Windows Vista, 7, 8, Server 2003/ 2008/ 2012

The new version of ASUSTOR Control Center is only suitable for use with ADM 2.3 DBS7 and onwards. If you are using an earlier version, Control Center will indicate to you that an upgrade is required.



1.2 Where to get Control Center

You can download the latest version of Control Center from:

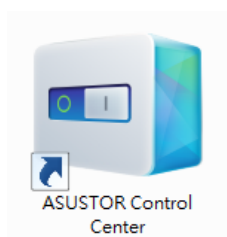
<http://www.asustor.com/service/downloads>

2. Using the Windows Version of Control Center

2.1 Installing Control Center

After downloading Control Center, unzip the downloaded file and then double-click on the installation file. Follow the instructions provided by the installation wizard to complete the installation of Control Center.

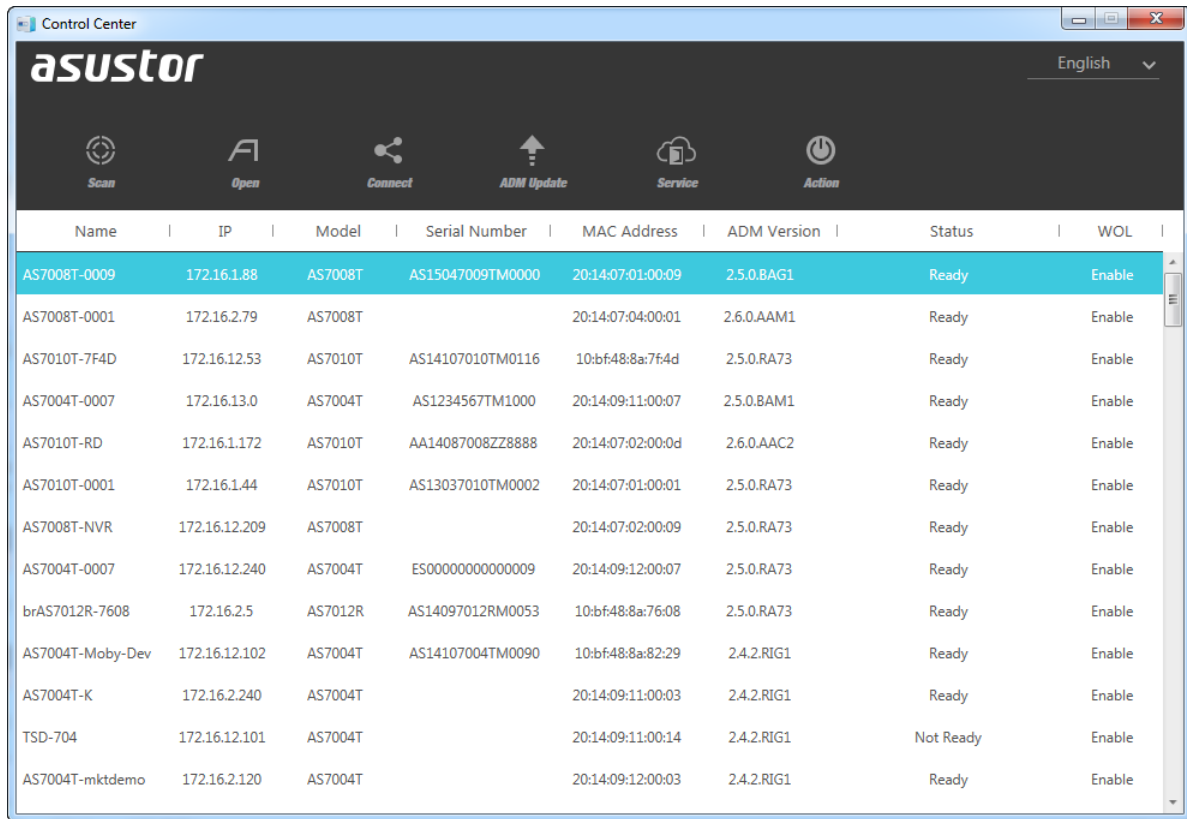
After installation has completed, you should be able to see the Control Center shortcut icon on your desktop. Double-click on it to start Control Center.



2.2 Introduction to Control Center functions

When you open Control Center, it will immediately begin to scan your local area network for ASUSTOR NAS devices. Under the status field of the interface you will be able to see if the individual system is ready, uninitialized or if its firmware needs to be upgraded.

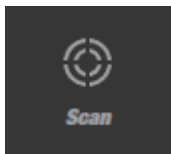
You can see the Control Center interface in the graphic below. The information that you will be able to view on the interface includes: name, IP, model, serial number, MAC address, ADM version, status (ready, uninitialized, upgrade required) and WOL (Wake-on-LAN enabled or disabled). You can also click on the heading of each column to change the sequence in which the devices are displayed. The language of the interface can be changed using the language menu in the upper-right hand corner. The menu buttons located at the top of the interface include: Scan, Open, Connect, ADM Update, Service and Action. These functions are described in more detail below:



The screenshot shows the Asustor Control Center application window. At the top, there is a navigation bar with icons for Scan, Open, Connect, ADM Update, Service, and Action. Below this is a table listing various NAS devices. The table has columns for Name, IP, Model, Serial Number, MAC Address, ADM Version, Status, and WOL. The first row is highlighted in blue.

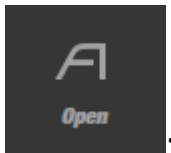
Name	IP	Model	Serial Number	MAC Address	ADM Version	Status	WOL
AS7008T-0009	172.16.1.88	AS7008T	AS15047009TM0000	20:14:07:01:00:09	2.5.0.BAG1	Ready	Enable
AS7008T-0001	172.16.2.79	AS7008T		20:14:07:04:00:01	2.6.0.AAM1	Ready	Enable
AS7010T-7F4D	172.16.12.53	AS7010T	AS14107010TM0116	10:bf:48:8a:7f:4d	2.5.0.RA73	Ready	Enable
AS7004T-0007	172.16.13.0	AS7004T	AS1234567TM1000	20:14:09:11:00:07	2.5.0.BAM1	Ready	Enable
AS7010T-RD	172.16.1.172	AS7010T	AA14087008ZZ8888	20:14:07:02:00:0d	2.6.0.AAC2	Ready	Enable
AS7010T-0001	172.16.1.44	AS7010T	AS13037010TM0002	20:14:07:01:00:01	2.5.0.RA73	Ready	Enable
AS7008T-NVR	172.16.12.209	AS7008T		20:14:07:02:00:09	2.5.0.RA73	Ready	Enable
AS7004T-0007	172.16.12.240	AS7004T	ES00000000000009	20:14:09:12:00:07	2.5.0.RA73	Ready	Enable
brAS7012R-7608	172.16.2.5	AS7012R	AS14097012RM0053	10:bf:48:8a:76:08	2.5.0.RA73	Ready	Enable
AS7004T-Moby-Dev	172.16.12.102	AS7004T	AS14107004TM0090	10:bf:48:8a:82:29	2.4.2.RIG1	Ready	Enable
AS7004T-K	172.16.2.240	AS7004T		20:14:09:11:00:03	2.4.2.RIG1	Ready	Enable
TSD-704	172.16.12.101	AS7004T		20:14:09:11:00:14	2.4.2.RIG1	Not Ready	Enable
AS7004T-miktdemo	172.16.2.120	AS7004T		20:14:09:12:00:03	2.4.2.RIG1	Ready	Enable

1. Scan



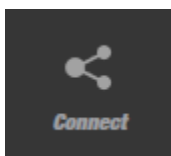
: Clicking on this button will cause Control Center to scan your local area network for ASUSTOR NAS devices again.

2. Open



: After selecting a NAS from the list and clicking open, Control Center will open your Web browser and connect to the NAS's ADM login screen or begin initialization. Users can also double click on the NAS in the list to bring up the ADM login screen in their Web browser.

3. Connect



: Clicking this button will provide you with 3 different options that you can use to connect to connect to the resources on your NAS.

Map Local Network Drive: Selecting this option and then following the steps provided by the wizard will allow you to map a shared folder from the NAS to your PC as a local network drive. After mapping the folder to your PC, accessing your NAS will be as convenient as accessing the hard drives on your computer.

Note:

1. *If you wish to use this option, please first confirm that your user account has the necessary access rights to access shared folders on the NAS.*
2. *Before using this option please ensure that you have enabled Windows file service on your NAS. (From the ADM desktop select **[Services]** → **[Windows]** → **[File Service]** → **[Enable Windows file service (CIFS/SAMBA)]**)*
3. *This connection method is only suitable for use when the NAS and computer are on the same local area network.*

Create Remote File Folder: This option will allow you to create a remote folder (via WebDAV or FTP) in Windows and connect it to a shared folder on your NAS. The folder will appear in [Network Location] under [Computer].

Note:

1. *Before using this option please ensure that you have enabled FTP service on your NAS. (From the ADM desktop select **[Services]** → **[FTP Server]** → **[Enable FTP server]**)*
2. *This connection method can be used no matter if the computer and NAS are on the same local area network. If you wish to use your computer to connect to your NAS using FTP via the Internet, please first complete EZ-Router configurations on the NAS or manually access your router interface to complete FTP (default port is 21) port forwarding configurations.*

Connect via FTP: After selecting this option, your web browser will open and connect to your NAS via FTP.

Note:

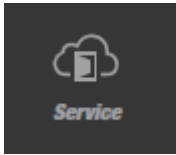
1. *Before using this option please ensure that you have enabled FTP service on your NAS. (From the ADM desktop select **[Services]** → **[FTP Server]** → **[Enable FTP server]**)*

4. ADM Update



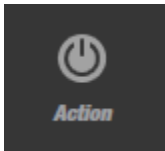
: This option provides ADM upgrades. After logging in the system will detect whether there is a new upgrade available and can immediately commence upgrading.

5. Service



: If you have installed Photo Gallery or Surveillance Center on your NAS, you can quickly access their web interfaces and log into them using the shortcuts provided here.

6. Action



: This button provides power control functions. These functions include Wake-on-LAN, Find Me, Night Mode, Sleep Mode, Restart and Shut Down. You must first log in to the system using administrator credentials before being able to use these functions.

Wake-on-LAN (WOL): Here you can enable or disable the Wake-on-LAN function. This function will also allow you to wake NAS devices on your local area network that are either in sleep mode or powered off.

Find Me: If you are managing multiple NAS devices, you can use this function to cause the system buzzer to sound and the power LED to blink, allowing you to quickly locate the NAS.

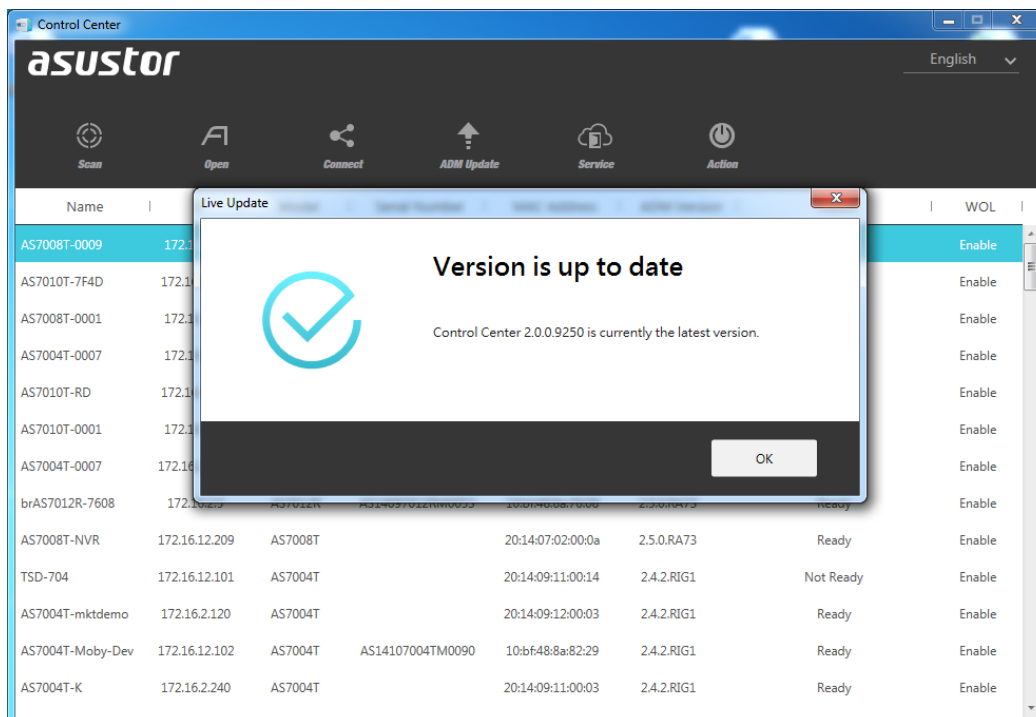
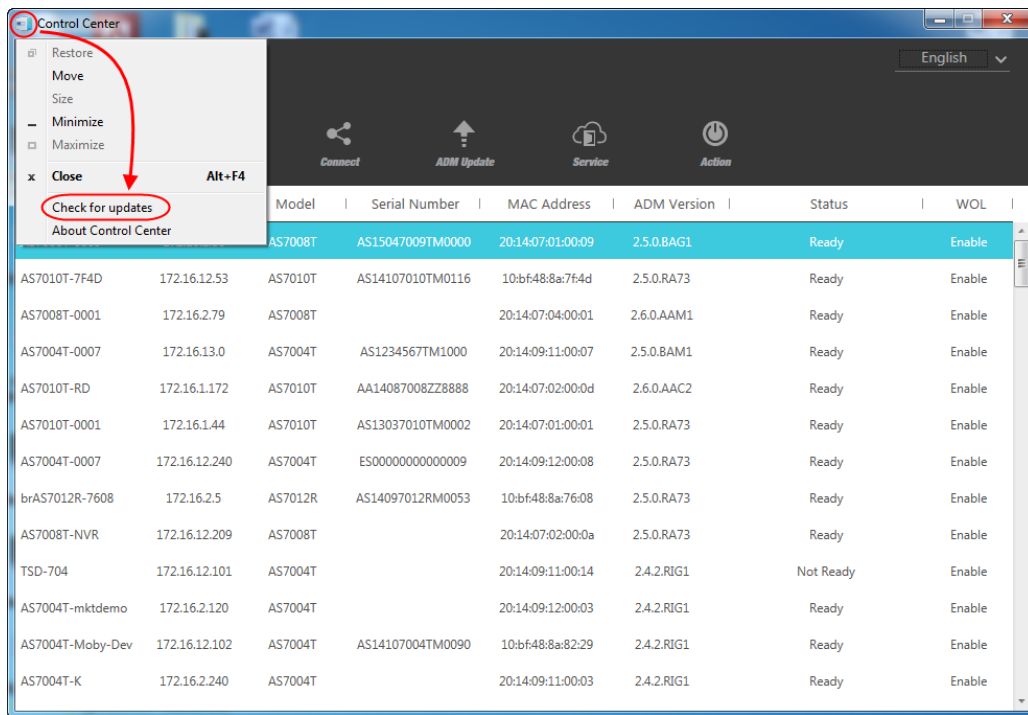
Night Mode: This function allows you to put the NAS into Night Mode.

Sleep: Puts the NAS into Sleep Mode.

Restart: Restarts the NAS.

Shut Down: Powers off the NAS.

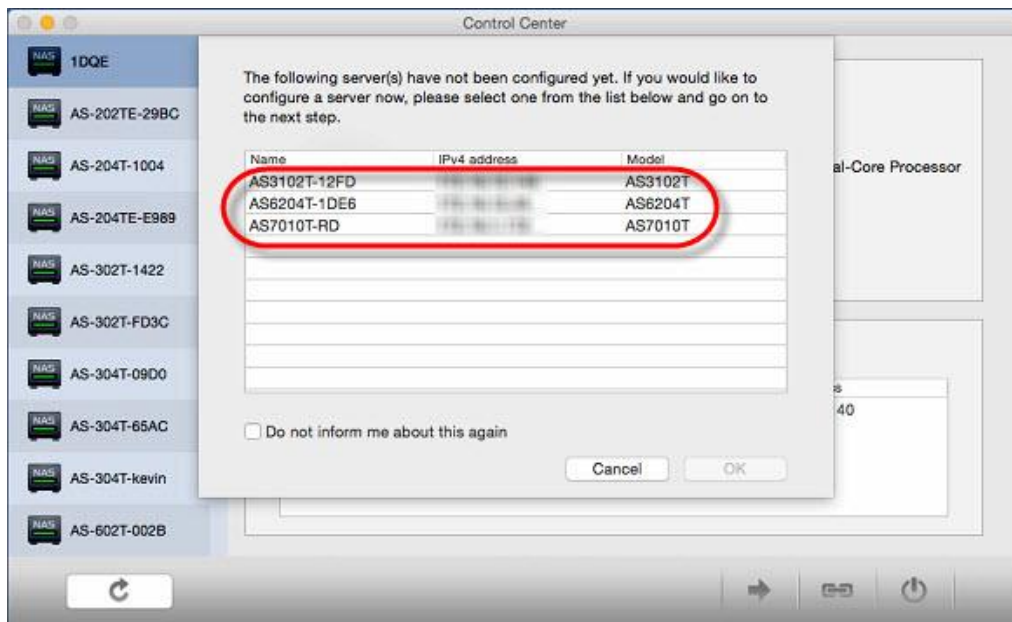
If you wish to check if you are using the latest version of Control Center, you can click on the icon in the upper left-hand corner and then select **[Check for updates]**. If new updates are detected, Control Center can automatically download and install them after prompting you to agree to do so.



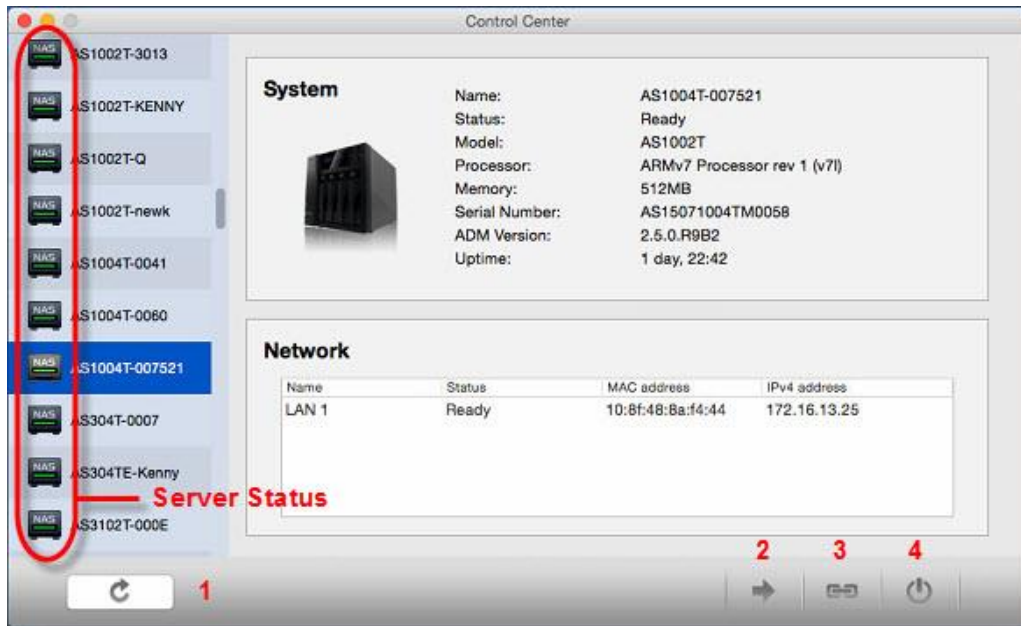
3. Using the Mac Version of Control Center

3.1 Introduction to Control Center functions

When you open Control Center, it will immediately begin to scan your local area network for ASUSTOR NAS devices. If any uninitialized NAS devices are detected, the installation wizard will automatically pop-up. You can follow the instructions provided by the wizard to quickly and easily complete system initialization.



Control Center's main interface is shown in the graphic below. In the left-hand panel, you will see a list of all the ASUSTOR NAS servers in your local area network organized in alphabetical order. All servers will have a small icon next to them allowing you to instantly view their status. On the right side you will see detailed information displayed for the server selected. There are also 4 function buttons located towards the bottom right of the interface.



The 3 different types of server statuses that you may see are:



Ready: The NAS is ready to be used and connected to.



Uninitialized: You will have to complete initialization for this NAS before being able to use its functions and services.



Unknown: Your computer is able to detect the NAS, but is unable to establish a direct connection. Example: The computer and the NAS are connected to the same switch, but their IPs are belong different network segments.

The 4 different function buttons located towards the bottom right of the interface are:

1. Scan



: Clicking on this button will cause Control Center to scan your local area network for ASUSTOR NAS devices again.

2. Open



: Selecting a NAS from the left-hand panel and then clicking on this button will cause Control Center to open your web browser to connect to the NAS's login page.

3. Connect



: Clicking this button will provide you with 3 different options that you can use to connect to connect to the resources on your NAS.

Map Local Network Drive: Selecting this option and then following the steps provided by the wizard will allow you to map a shared folder from the NAS to your Mac as a local network drive. After mapping the folder to your Mac, accessing your NAS will be as convenient as accessing the hard drives on your computer.

Note:

1. *If you wish to use this option, please first confirm that your user account has the necessary access rights to access shared folders on the NAS.*
2. *Before using this option please ensure that you have enabled Apple Filling Protocol (AFP) on your NAS. (From the ADM desktop select [Services] → [Mac OS X] → [File Service] → [Enable Mac file service (AFP)])*
3. *This connection method is only suitable for use when the NAS and computer are on the same local area network.*

Connect via FTP: After selecting this option, your web browser will open and connect to your NAS via FTP.

4. Action



: Clicking this button will provide you with NAS software updates and power control functions.

Note: The functions provided by this button are only available to users in the NAS's administrators group.

Software Update: You can go to the Download section of the ASUSTOR website (<http://www.asustor.com/service/downloads>) to get the latest ADM firmware for your NAS model. After saving the firmware file to your computer, you can use this function to browse to the location of the firmware file. Once you select the firmware file and click on [Ok], your NAS will begin to install the new firmware.

Restart: Restarts the NAS

Sleep: Puts the NAS into Sleep Mode.

Wake-on-LAN: This function will allow you to wake NAS devices on your local area network that are either in sleep mode or powered off.

Shut Down: Powers off the NAS.

If you wish to check if you are using the latest version of Control Center, you can click on the icon in the upper left-hand corner and then select **[Check for updates]**. If new updates are detected, Control Center can automatically download and install them after prompting you to agree to do so.

